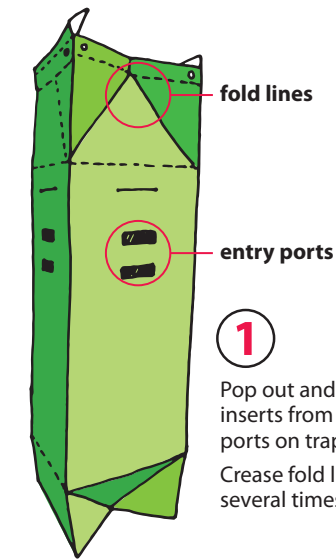
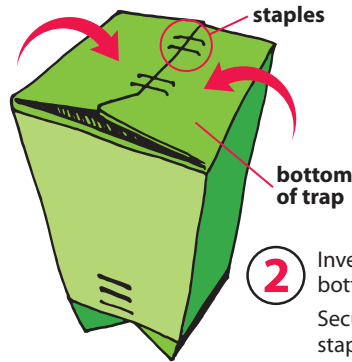


# Gypsy Moth Trap – ASSEMBLY & USE

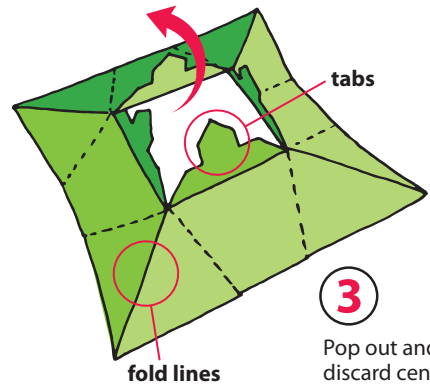
**Item List:** Milk Carton Body • Trap Hood



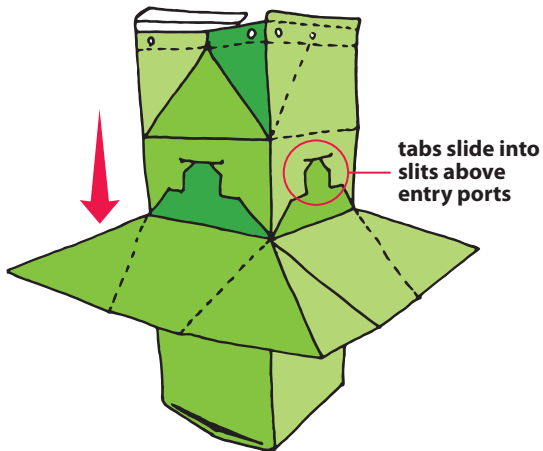
**1** Pop out and discard inserts from 8 entry ports on trap body. Crease fold lines several times.



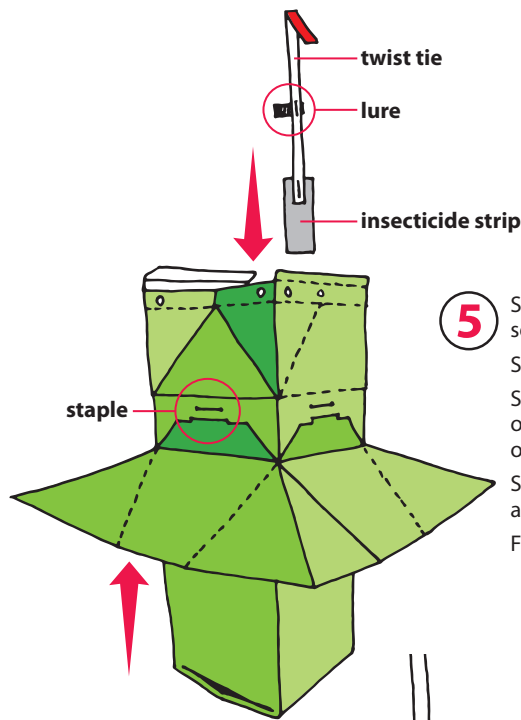
**2** Invert trap and fit bottom together. Secure with staples using stapling pliers.



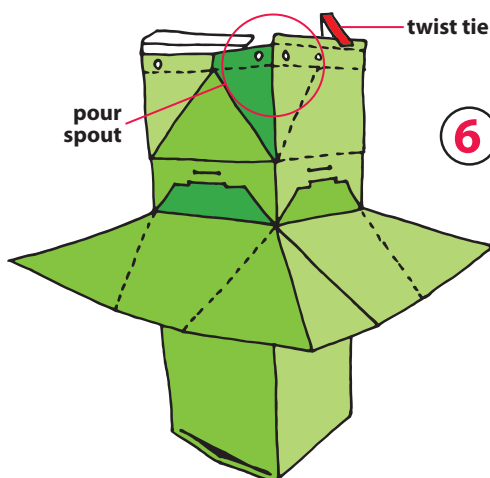
**3** Pop out and discard center insert of trap hood. Crease all tabs upward and crease solid fold lines.



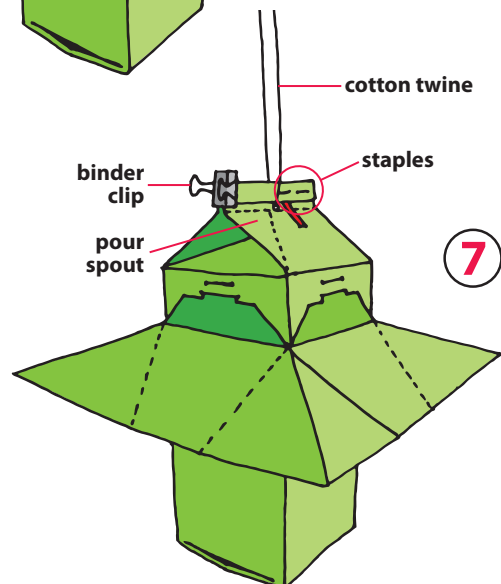
**4** Slide hood (shiny side up) over top of trap and down body of trap, until tabs are just below slits on trap body. Slide hood back up body of trap so that tabs on hood slide into slits.



**5** Slide hood as far up as possible so tabs seat tightly into slits on trap body. Staple tabs to the inside of trap body. Staple insecticide strip onto one end of 7" twist tie (handle with care using outer package or rubber gloves). Staple lure perpendicular to twist tie, about 2.5" from insecticide strip. Fold over top 1" of twist tie.



**6** Insert twist tie into trap body, with top 1" folded over one side of top of trap. Place top of twist tie at center of trap, just behind pour spout. Staple twist tie to top of trap.



**7** Fold top ends of trap together in toward center of trap. Staple top behind pour spout. Secure pour spout with a binder clip. Hang trap using 24" length of cotton twine (20 ply or stronger) through center hole at top of trap.